

INSTRUCTIONS

TYCO SUPER BLOCKS™

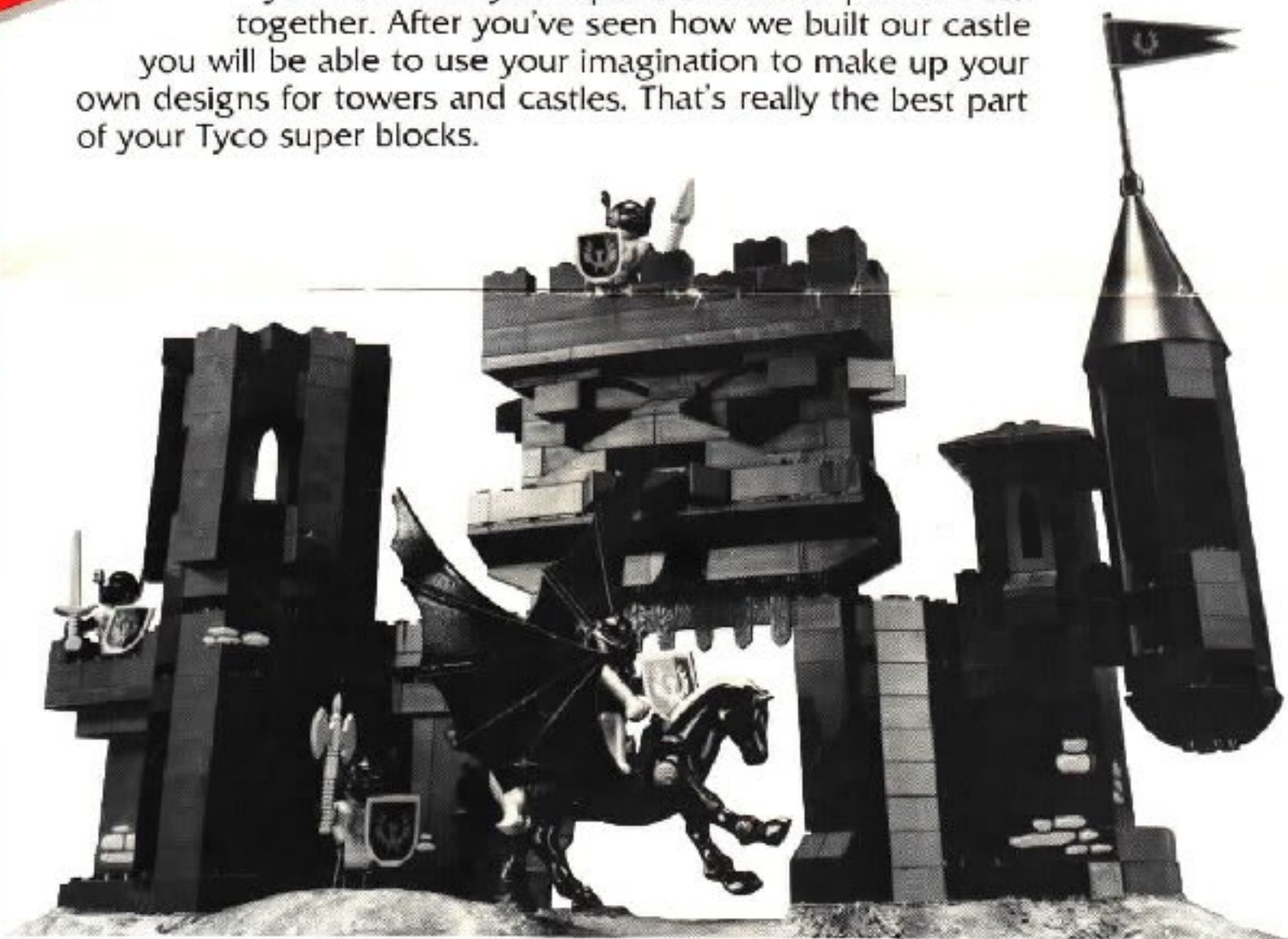
Black Knights' Castle Building Set

WORKS WITH LEGO®



Tyco Super Blocks connect to LEGO® Bricks and Tyco Pre-School Super Blocks. LEGO® is a registered trademark of LEGO A/S.

These instructions will show you how to build the castle pictured on your set's package. Following these steps will show you how the Tyco super block castle pieces work together. After you've seen how we built our castle you will be able to use your imagination to make up your own designs for towers and castles. That's really the best part of your Tyco super blocks.

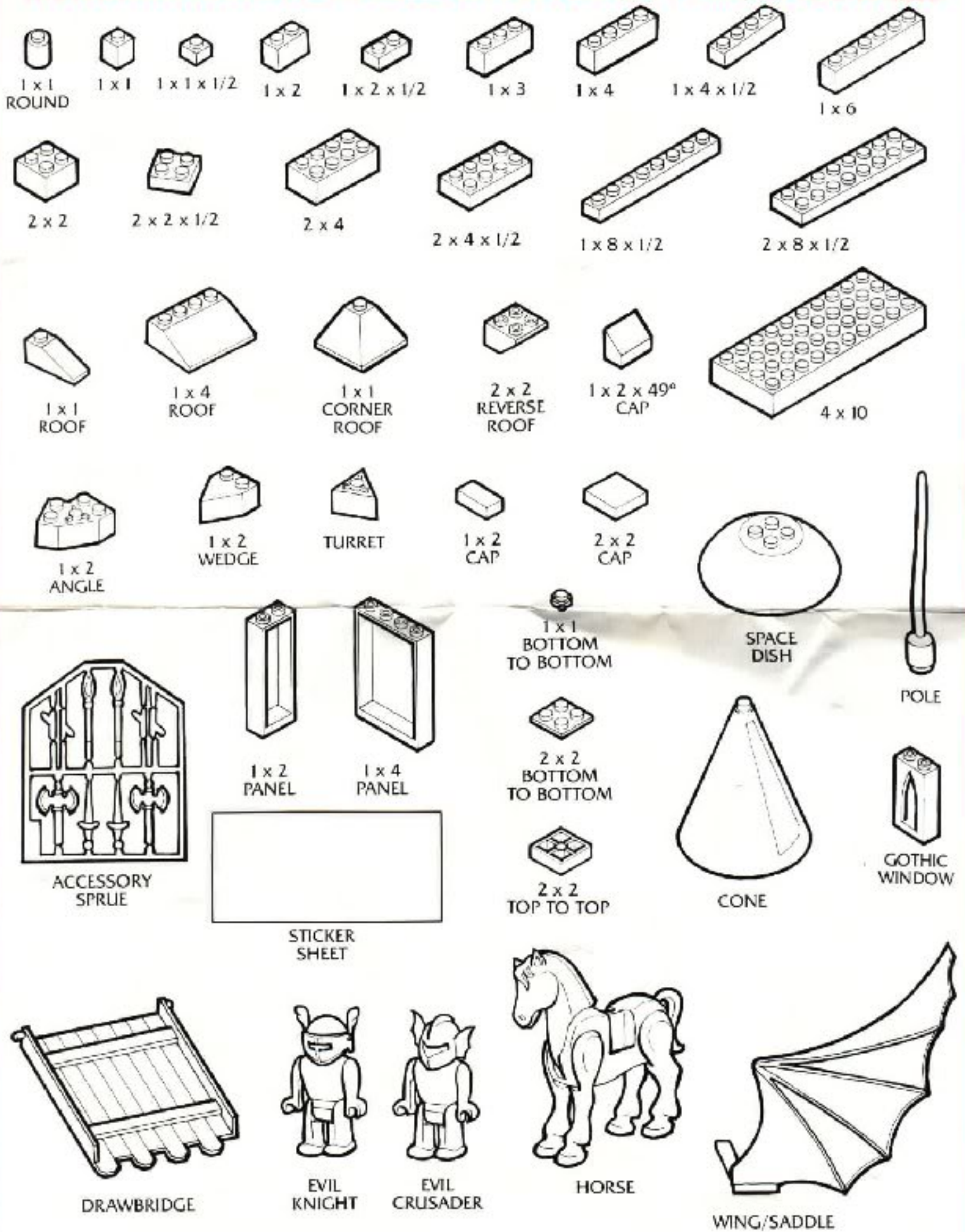


TYCO SUPER BLOCKS ARE SAFE, CREATIVE, FUN.

TYCO "Standard Size" SUPER BLOCKS are intended for use by children 4 years of age and older. As with any toy construction set, TYCO SUPER BLOCKS contain many small parts that must be kept away from children under 3.

TYCO SUPER BLOCKS CASTLE PIECES

THE FOLLOWING INDIVIDUAL PIECES CAN BE FOUND IN VARIOUS CASTLE SETS.



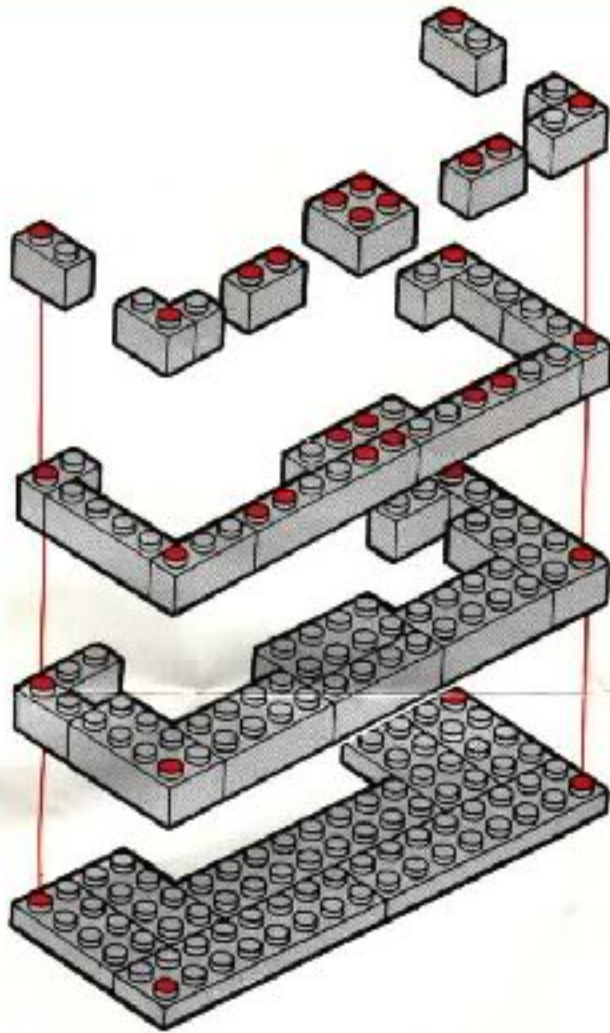
INSTRUCTIONS

5283/494 pieces

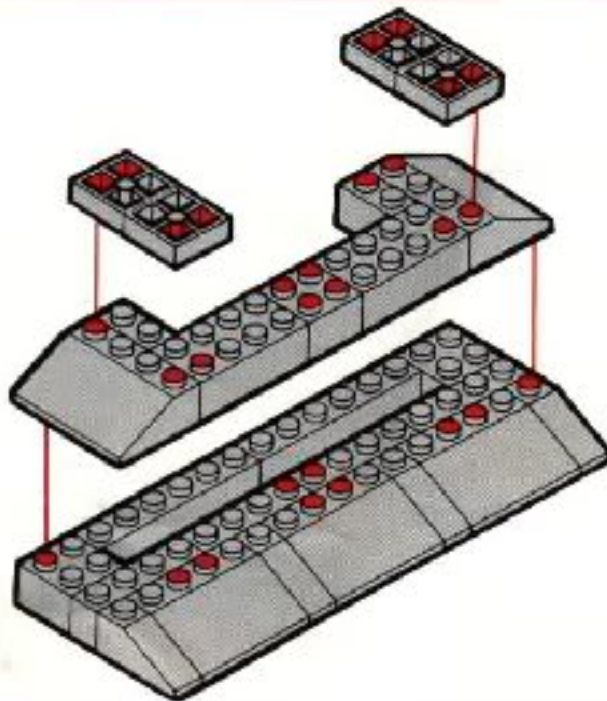
Follow the red lines and dots to build the main parts of your castle, then refer to step 8 for final assembly.

 Purple  Red  Black

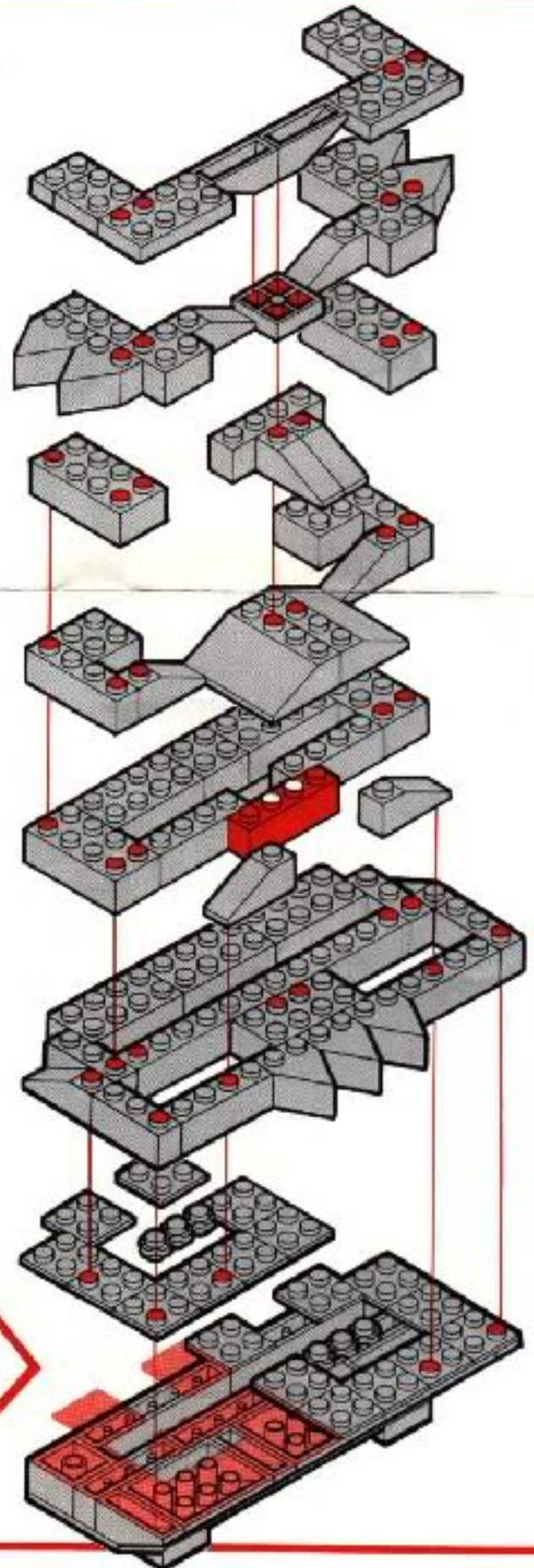
1



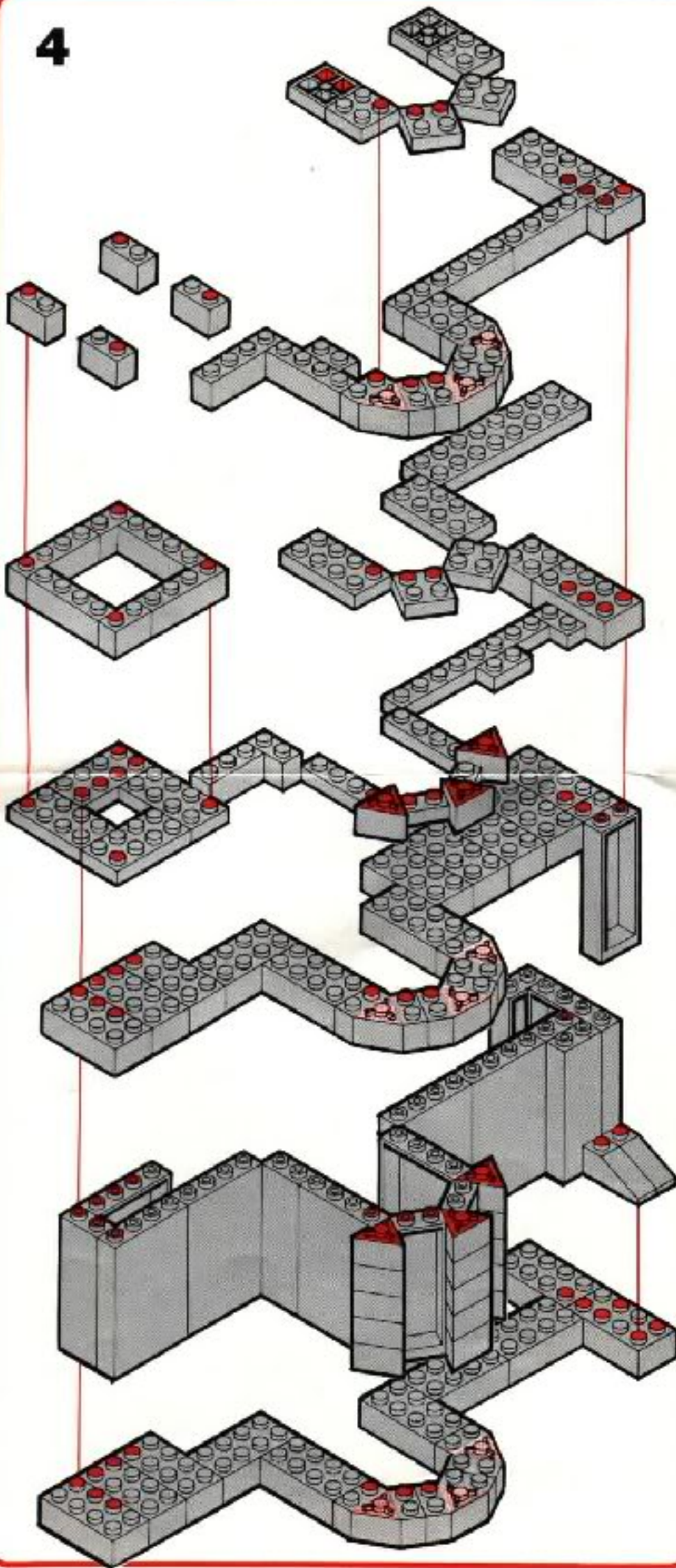
2



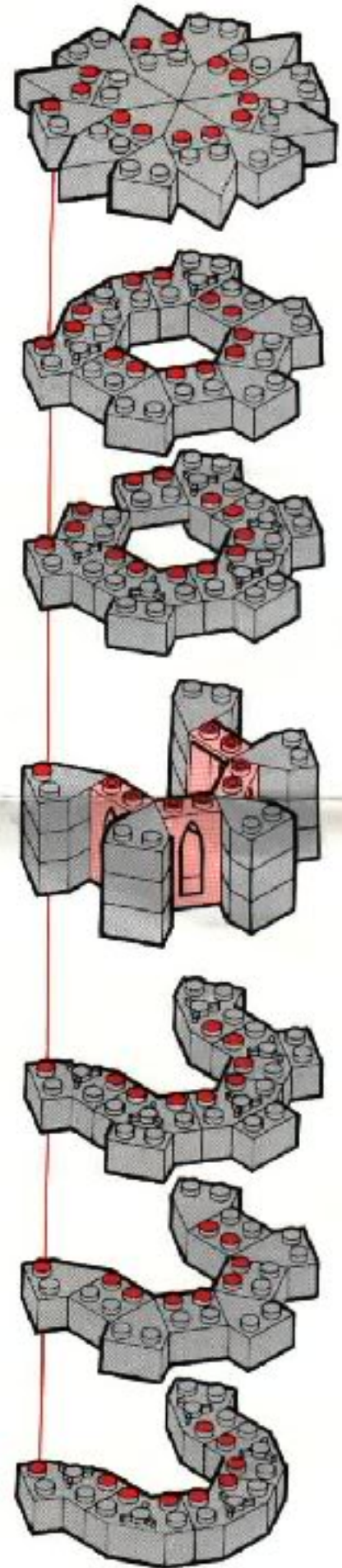
3



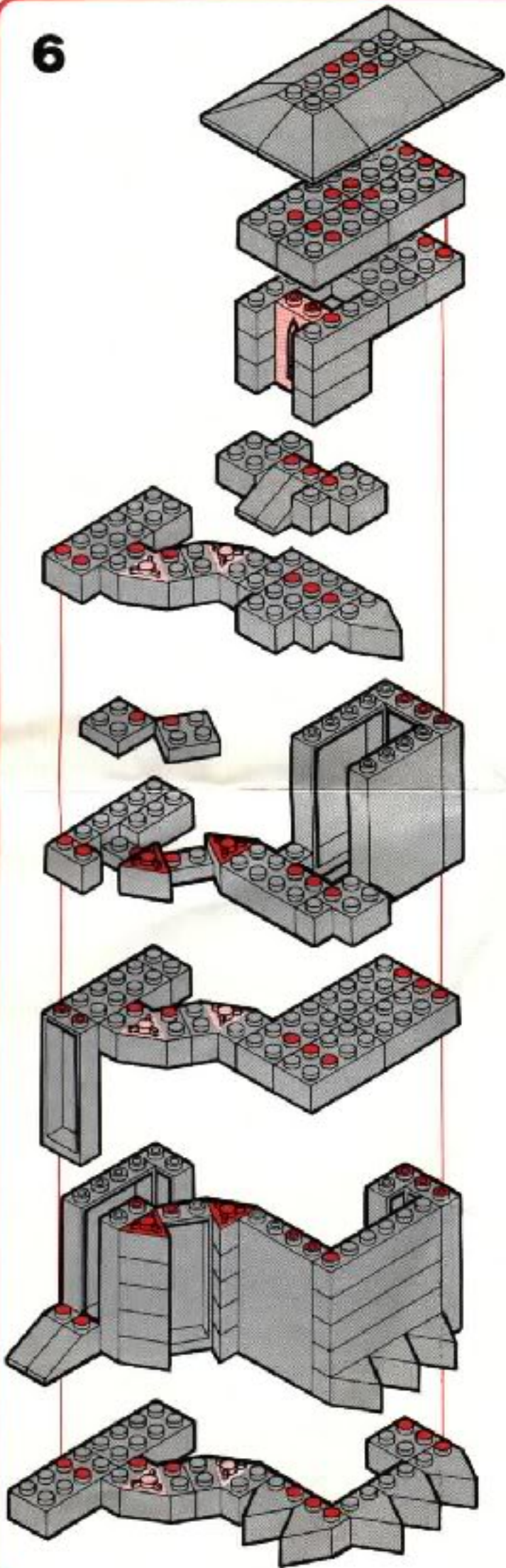
4



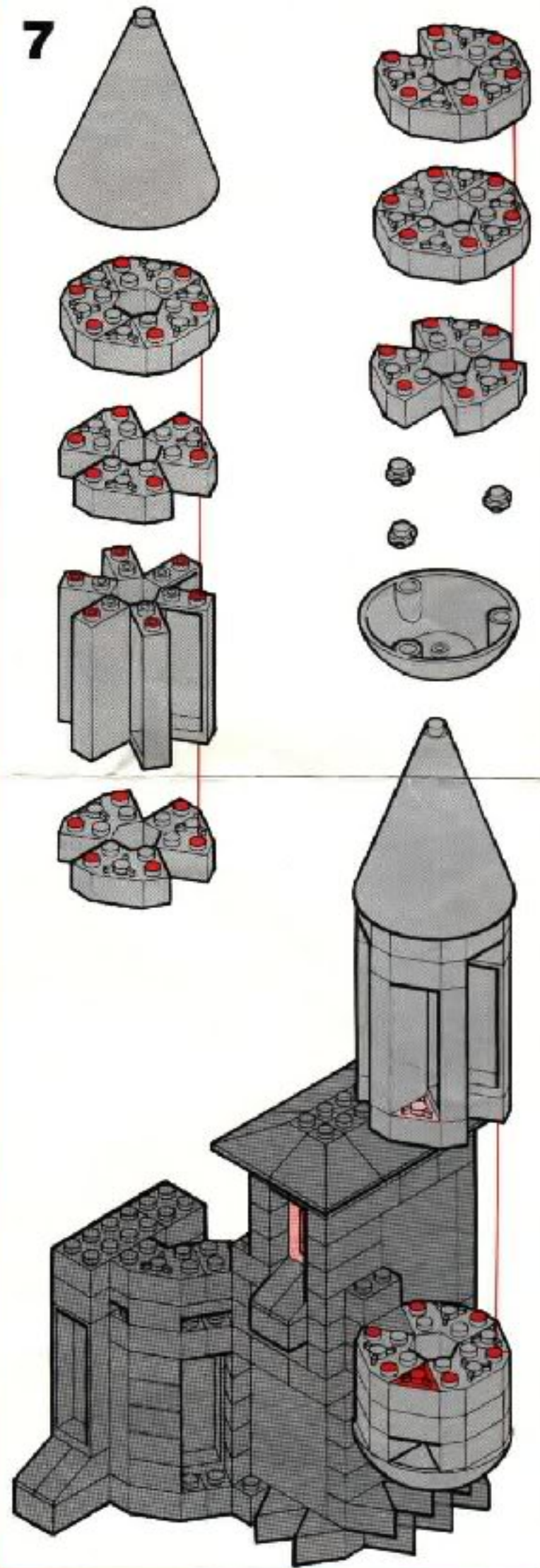
5



6



7



FINAL ASSEMBLY

8

